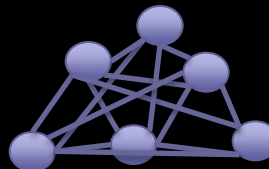




SPECIAL OPERATIONS TRAINING AND EDUCATION CENTRE

@SOTEC_Army

SOCOMD HPO



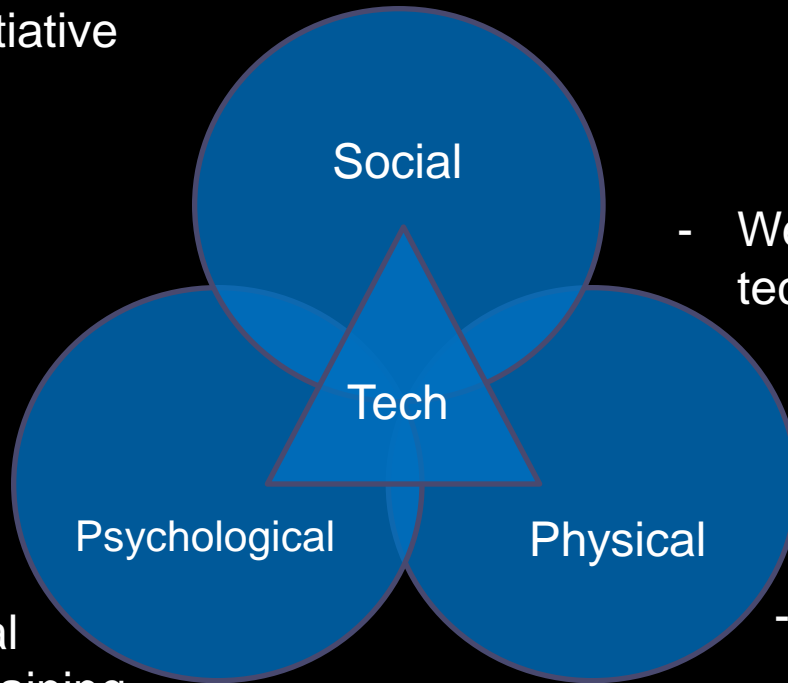
SPECIAL OPERATIONS COMMAND





SOCOMD HPO Initiatives

- Force and families initiative



- Emotional / physiological regulation training

- Wearable technology

- Injury management
- Individualised training programs
- Nutrition initiatives





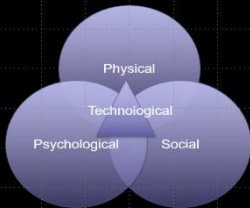
SOCOMD HPO Network Strategy

HPO is defined as the application of knowledge, skills and technology to holistically enhance the physical, psychological and social components of SOF personnel performance throughout their careers and in future roles outside SOCOMD and ultimately Defence.

Ends

The ultimate objective of SOCOMD's HPO Network Strategy is to enable SOCOMD's personnel to repeatedly outsmart, outperform and outlast lethal, agile, adaptable and well connected adversaries in the conduct of special operations campaigns.

SOCOMD HPO

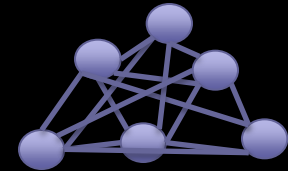


Ways

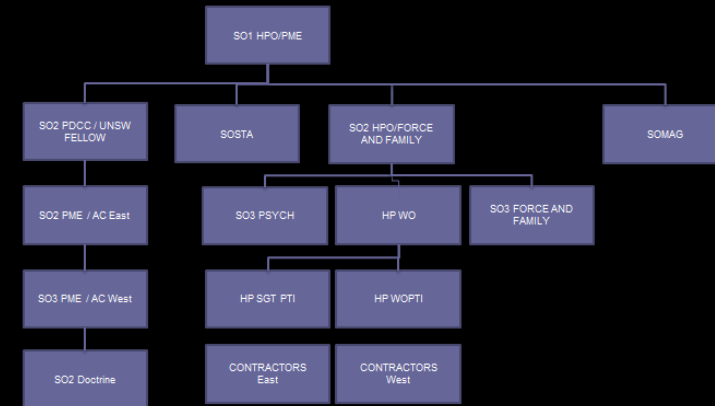
1. HPO Network Model.
2. Holistic Wellbeing Education.
3. Continuous Learning.
4. Continuous Modernisation.
5. Governance and Quality Assurance. SOMAG
6. HPO Research.
7. Data Collection and Management.

- HPO/PME Wing
- SOCOMD HPO Exponents.
- SOCOMD Annual HPO Seminar.
- SOCOMD Garrison Health Support - Plan LYELL. (SOMAG)
- External Agencies.
- External Service Providers.
- HPO Information Portal.
- HPO Fly-Away Kits.
- SOCOMD Force and Family Program.
- Financial Resources.

Means



	SF Preparation HPO	Ab-Initio and Exponent Education	HPO HPO	Force Sustainment HPO	Future Enhancements Near Term (funded)	Future Enhancements Med Term (S&T)
Lead	SOTEC HPO CoE	SOTEC HPO CoE		Units SOJ07 (Plan LYELL)	DSOD	DSTG
Supporting 1		SOCOMD Units			SOTEC HPO CoE	DSOD
Supporting 2		DSTG		SOTEC HPO CoE	Units	SOTEC HPO CoE





SOCOMD HPO Research Questions

Selection

Are key cognitive traits during selection still relevant?

- identify at initial recruitment?
- attract recruits?

How can increased female performance be facilitated?

Training

How to train for rapidly changing and complex environments?

What emerging technologies and techniques can be applied to training and learning?

- New generation of soldiers?
- Wearables?

Other

What are the energy requirements of SF soldiers?

What performance-enhancing supplements/aids would benefit SF personnel?

What is the impact of concussion and/or mTBI on operational capability and cognitive function?

